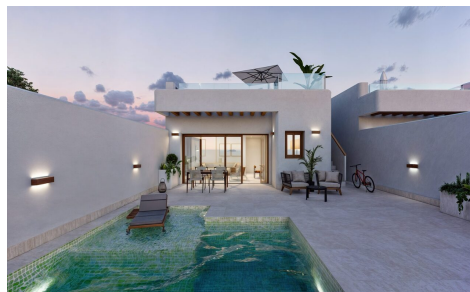


58 Fase 3



Villa in torre-pacheco

€264,900



2



2



74m²



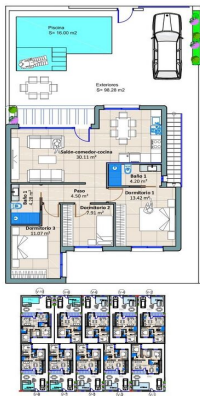
168m²



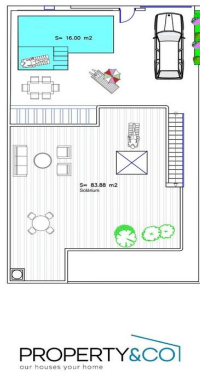
RESIDENCIAL EL PASICO FASE 2 Y FASE 3 - New build villa with 2 bedrooms in Torre-Pacheco, Costa Blanca, Spain.



V	CONSTRUIDA	EXTERIORES Y SOLARUM	PARCELA
V-10	90.48 M2	98.28 + 83.88 + 182.16 M2	207.00 M2
V-8	73.82 M2	83.85 + 67.75 + 151.60 M2	183.30 M2
V-6	73.82 M2	83.85 + 67.75 + 151.60 M2	183.30 M2
V-4	73.82 M2	83.85 + 67.75 + 151.60 M2	183.30 M2
V-2	73.82 M2	83.85 + 67.75 + 151.60 M2	183.30 M2
V-10	90.48 M2	98.28 + 83.88 + 182.16 M2	207.00 M2
V-8	73.82 M2	83.85 + 67.75 + 151.60 M2	183.30 M2
V-6	73.82 M2	83.85 + 67.75 + 151.60 M2	183.30 M2
V-4	73.82 M2	83.85 + 67.75 + 151.60 M2	183.30 M2
V-2	73.82 M2	83.85 + 67.75 + 151.60 M2	183.30 M2
V-10	90.48 M2	98.28 + 83.88 + 182.16 M2	207.00 M2



VIVIENDA N° 10
 Sup. Parcela 198.00 M2
 Sup. Construida 90.48 M2
 Sup. Exteriores 182.16 M2
 Sup. Piscina 16.00 M2



V	CONSTRUIDA	EXTERIORES Y SOLARUM	PARCELA
V-50	90.48 M2	98.28 + 83.88 + 182.16 M2	207.00 M2
V-48	90.48 M2	98.28 + 83.88 + 182.16 M2	207.00 M2
V-47	73.82 M2	83.85 + 67.75 + 151.60 M2	183.30 M2
V-58	73.82 M2	83.85 + 67.75 + 151.60 M2	183.30 M2
V-56	90.48 M2	98.28 + 83.88 + 182.16 M2	207.00 M2
V-49	90.48 M2	98.28 + 83.88 + 182.16 M2	207.00 M2

